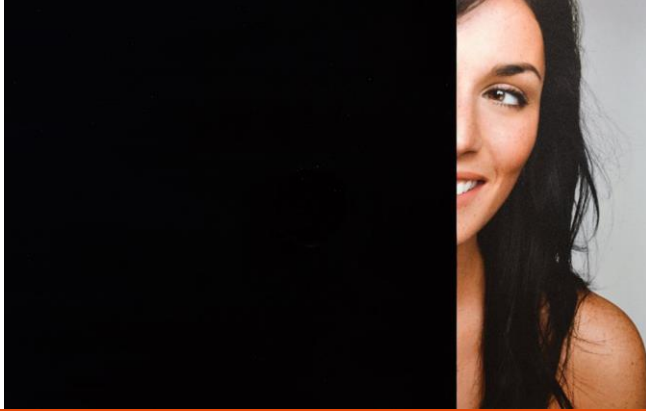


SOLYX® Glass Finishes

SXWF-BO Blackout



Product Description

SOLYX® SXWF-BO Blackout is a black, completely opaque, polyester film with a high gloss finish, ideal for obscuring direct visibility.

Specifications

Product Code	SXWF-BO
Product Family	Architectural/Opaque
Film Type	Polyester
Adhesive Type	Pressure-Sensitive
Usage	Interior or Exterior
Available Width(s)	24", 36", 60", 72"
Full Roll Length	100 linear feet (30.5m)
Thickness	2 mil
Shading Coefficient	0.19
Visible Light Reflection	15%
Visible Light Transmission	0%
UV Transmission	0%
Total Solar Energy Rejected	83%
Solar Energy Absorbed	60%
Glare Reduction	100%

Product Construction

Face Film

2 mil Polyester

Adhesive

Clear, Solvent Acrylic, Pressure-Sensitive

Release Liner

Silicone Coated

Product Details

SOLYX® SXWF-BO Blackout is a black, completely opaque, polyester film with a high gloss finish. This film is made of multi-layered durable polyester for 100% light blocking applications and is supplied with a silicone coated liner which protects the clear pressure-sensitive adhesive. It is designed for application to interior glass or on the outside surface of exterior glass. This ideal privacy film is very easy to install because it is thinner than standard blackout films.

NOTE: This film is not recommended for installation onto single-pane plate glass! It is only suitable for tempered, heat strengthened, double insulated glass units or single pane tempered glass.

Flammability Rating

This product meets ASTM E84 and is classified as Class A as defined in NFPA 101, Life Safety Code®.

LEED Credit EQ 4.1 Low Emitting Materials, Adhesives & Sealants

This product has zero VOC content according to 40 CFR 59, Subpart D (EPA method 24).

Installation and Warranty

Installation

Installation should be in accordance with the manufacturer's installation instructions. This film is applied using the same tools and techniques used for installing window tinting films.

Warranty

This SOLYX® product will be free from defects in material and manufacture for a period of ten (10) years from the date of installation. See warranty information for specific details.

Product Distribution and Contact Information

Distribution

SOLYX® Decorative Films are available through authorized Installing Dealers, Distributors, or directly from Decorative Films, LLC.

Samples submitted upon request.

Contact Information

Decorative Films, LLC

1-888-657-5224

www.decorativefilm.com